

Pacific Forest and Watershed Lands
Stewardship Council

Status Report on the Pacific Gas and
Electric Company Land Conservation
Commitment

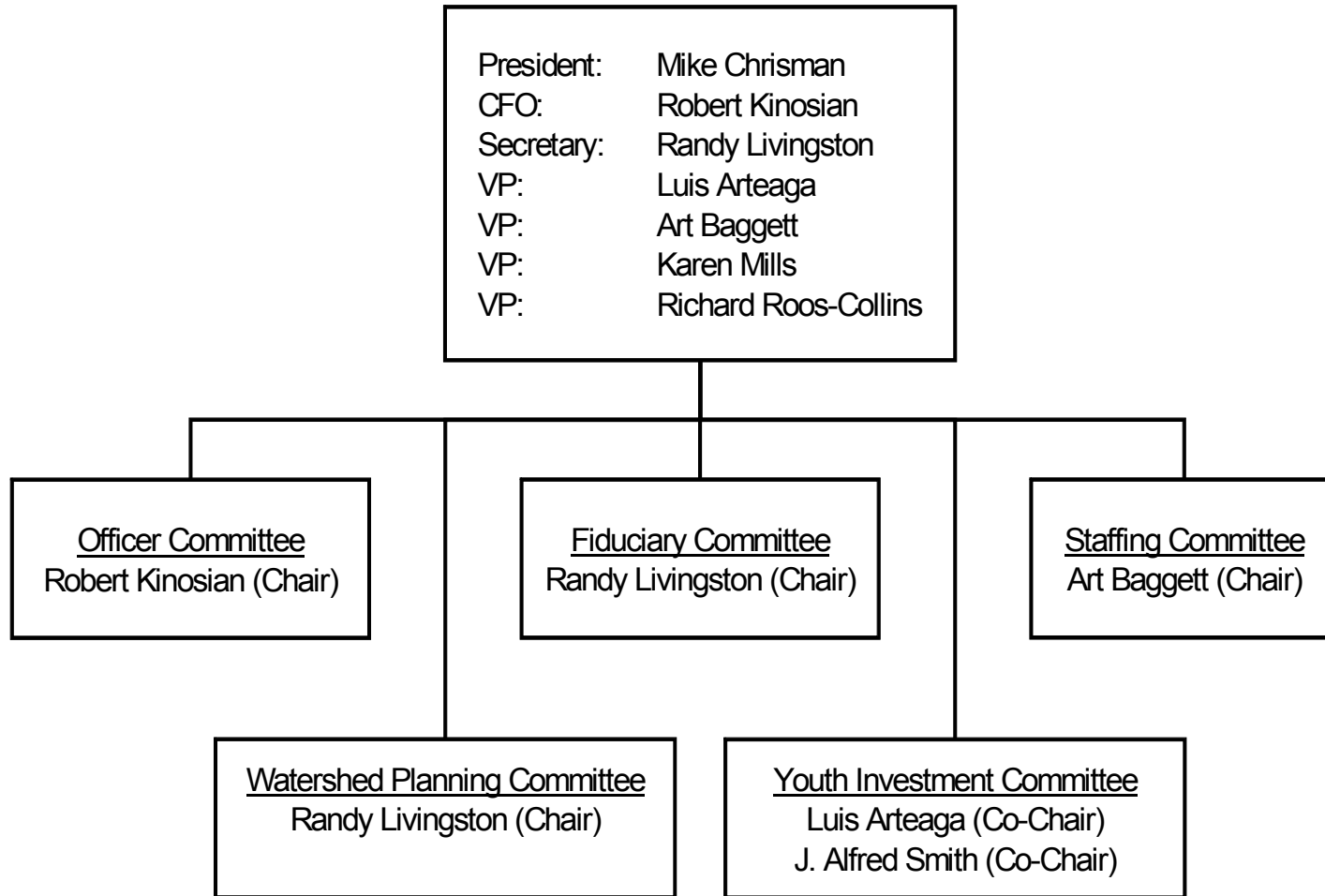
Presentation to the California Public Utilities Commission

October 28, 2004

The Stewardship Council was formed pursuant to the Settlement Agreement between PG&E and the CPUC to oversee the Land Conservation Commitment and carry out related environmental enhancement activities. The Land Conservation Commitment is as follows:

1. Permanently protect approximately 140,000 acres of watershed lands associated with the hydroelectric projects, as well as 655 acres in the Carizzo Plains:
 - Donation of conservation easements and/or fee simple title to one or more public agencies or qualified non-profit conservation organizations

2. Implement the Environmental Opportunity for Urban Youth Program:
 - Provide wilderness opportunities for underprivileged youth
 - Develop and maintain urban parks and recreation facilities



Administrative:

- Start-Up Activities
- Staffing and Support
- Public Meetings

Key Next Steps / Goals by the End of 2004:

- Select and Hire an Executive Director
- Go Live with the Stewardship Council Website
- Apply for Tax Exempt Status as a Charitable Foundation

Land Conservation Plan:

- Field Tours
- Third-Party Uses
- Land Conservation Plan

Key Next Steps / Goals:

By the End of 2004:

- Inventory Existing Data
- Develop the Public Outreach Plan

By May 1, 2005:

- Design and Implement Database Structure
- Complete First Phase of Public Outreach
- Hire Consultant to support detailed Analysis and development of the Land Conservation Plan

Youth Investment Initiative:

- Public Outreach
- Program Goals
- Staffing and Implementation

Prime Objective: Build a grant-making program for the PG&E Service area that will:

- Serve at-risk youth
- Invest in projects for youth that are focused and continued over time
- Invest in communities that are in the greatest needs, and projects that might otherwise not be funded
- Link communities to resources to help ensure success both before and after a grant is made
- Create sustainable projects
- Seek to create some project and funding sources that extend beyond 10 years
- Create a model for new approaches to grant-making, and
- Ensure the ability to invest in new, unique, and innovative opportunities.

Questions?

Background Information

Land Conservation Commitment

Stewardship Council Members and Alternates

Organization	Board Member	Alternate Board Member(s)
Association of California Water Agencies	Steve Hall Executive Director	Dan Smith Director of Regulatory Affairs
California Department of Fish and Game	Ryan Brodrick Director	
California Farm Bureau Federation	Karen Norene Mills Associate Counsel	Ronda Lucas Attorney
California Forestry Association	Phil Aune Vice President	David A. Bischel President & CEO
California Hydropower Reform Coalition	Richard Roos-Collins Director	Chuck Bonham Trout Unlimited
California Public Utilities Commission	Steve Larsen Executive Director	Dan Adler Strategic Planning
California Public Utilities Commission - California State Assembly	Hannah-Beth Jackson Assemblymember	
California Public Utilities Commission - Antioch Baptist Church, San Jose	J. Alfred Smith, Jr. Pastor	
California Public Utilities Commission - Latino Issues Forum	Luis M. Arteaga Executive Director	

Organization	Board Member	Alternate Board Member(s)
California Resources Agency	Mike Chrisman Secretary	Sandra Ikuta Deputy Secretary, General Counsel
Central Valley Regional Water Quality Control Board	Robert Schneider Chair	James C. Pedri Executive Officer
Office of Ratepayer Advocates	Robert Kinosian	Truman Burns
Pacific Gas & Electric Company	Randy Livingston Senior Director	Mike Schonherr Principal Project Manager
Regional Council of Rural Counties	Robert A. Meacher Supervisor, Plumas County Board of Supervisors	Sue Horne Supervisor, Nevada County Board of Supervisors
State Water Resources Control Board	Art Baggett, Jr. Chair	Gary M. Carlton, P.E. Member
The Trust for Public Land	Dave Sutton	Rachel Dinno
U.S. Forest Service / Bureau of Land Management	Chris Nota Forest Service Duane Marti BLM	

Goals

- Improve the lives of underserved youth by providing wilderness and environmental education and recreation opportunities
- Add and enhance recreational facilities and parks in underserved communities
- Make lasting investments improvements in the social, physical, and environmental infrastructure of low-income communities

Guiding Principles

- Address the specific needs and concerns of low-income communities
- Address the specific needs of youth by providing job skills, educational opportunities, leadership training, and new experiences that broaden life experience and opportunity
- Augment existing funding or leverage other funding
- Build leadership and organizational capacity in low-income communities
- Be flexible in the amount of funding and the kind of assistance that may be needed
- Be transparent and inclusive
- Foster partnerships and innovations
- Explore the connection between wilderness/watersheds and urban/rural communities

Land Conservation Commitment

Fun Facts

Northern Area Hydro

DeSabra Watershed - 15 powerhouses, 5 FERC licensed and 3 unlicensed projects, combined capacity of 760.1 megawatts

FERC No.	Project Name
2105	UNFFR
1962	Rock Creek/Cresta Project
2106	Poe Project
619	Bucks Creek Project
803	DeSabra/Centerville Project Hamilton Branch Lime Saddle Coal Canyon

Shasta Watershed - 16 powerhouses, 6 FERC licensed projects, combined capacity of 809.9 megawatts

FERC No.	Project Name
2661	Hat Creek Project
2687	Pit 1 Projects
233	Pit 3, 4, 5 Project
2106	McCloud-Pit Project
606	Kilarc Cow Creek Project
1121	Battle Creek Project

Central Area Hydro

Motherlode Watershed - 8 powerhouses, 4 FERC licensed projects, combined capacity of 312 megawatts

FERC No.	Project Name
137	Mokelumne River Project
2130	Spring-Gap Stanislaus
1061	Phoenix Project
2467	Merced Falls Project

Drum Watershed - 15 powerhouses, 4 FERC licensed projects, combined capacity of 218.2 megawatts

FERC No.	Project Name
2310	Drum-Spaulding Project
1403	Narrows #1 Project
2155	Chili Bar Project
77	Potter Valley Project

Southern Area Hydro

Helms/Kings/Crane Valley Watersheds - 14 powerhouses, 7 FERC licensed projects, including Helms Pumped Storage Facility, combined capacity of 1,786.6 megawatts

FERC No.	Project Name
2735	Helms Pumped Storage
1988	Haas-Kings Project
175	Balch 1&2 Project
96	Kerckhoff Project
1354	Crane Valley Project
178	Kern River Project
1333	Tule River Project

Land Conservation Commitment

Fun Facts

General Statistics

Total Acres:	141,727
Acres Within FERC Boundaries:	81,000
Acres Outside FERC Project Boundaries:	60,727
Total Number of SBE Parcels:	981
Largest Single SBE Parcel:	778
Largest Single Contiguous Property:	27,064
Smallest Single SBE Parcel:	0.01
Total Miles of Flumes:	44
Total Miles of Canals:	184
Total Miles of Tunnels:	135
Total Miles of Pipes:	19
Total Number of Reservoirs:	99
Total Number of Water Diversions:	76
Electric Power Line Rights of Way:	1,381
Gas Line Rights of Way:	20

Eel River Area



Land Types

Hardwood/Oakwood Lands:	11,718
Brush Land:	4,493
Rocky/Barren Land:	5,517
Grassland:	5,504
Marshland:	4,184
Developed/Cultivated Land:	836

The watershed lands are vast and dispersed, covering more than 221 square miles in 22 counties across the state

Watershed Lands Overview

Project Vicinity Map

County by County Acreage

COUNTY	ACREAGE
Alpine	1,983
Amador	4,891
Butte	8,029
Calaveras	318
El Dorado	225
Fresno	1,527
Kern	664
Lake	5,271
Lassen	6,627
Madera	2,019
Mariposa	8
Mendocino	2,112
Merced	12
Nevada	10,653
Placer	7,962
Plumas	38,094
Shasta	47,462
Tehama	1,946
Tulare	45
Tuolumne	1,840
Yuba	41



Land Conservation Commitment

Diverse Environmental Resources

Resource Management

Cultural Resources: There are nearly 500 managed cultural resource sites on the watershed lands, including historic, pre-historic, and multi-component sites.

Forest Management: The watershed lands currently support, or are capable of supporting, 51,778 acres of commercial conifer or hardwood species – 158 of which are legally defined as late succession stands.

Wildlife Communities: Sierran mixed conifer, montane hardwood-conifer, montane hardwood, blue oak-gray pine, blue oak woodland/savannah, valley oak woodland, coastal oak woodland, montane chaparral, mixed chaparral, chamise-redshank chaparral, pasture, annual grassland, closed-cone pine-cypress, ponderosa pine, Jeffrey pine, juniper, lodgepole pine, red fir, white fir, montane riparian, valley foothill riparian, wet meadows, fresh emergent wetland, riverine, and lacustrine.

Water Delivery and Use

Water Delivery: Pursuant to various agreements, contracts, and water rights, PG&E delivers water at 54 locations for consumption by 39 different user groups.

PG&E Water Use:

- Gross Storage – About 2,283,000 acre feet, the largest portion of which is on the Feather River system. This number represents about 6% of the state total storage.
- Consumptive Deliveries – Approximately 200,000 acre feet per year, less than 1% of storage, are delivered to other wholesale entities.

PG&E works with stakeholders to preserve California's heritage and historic resources, perform environmentally beneficial and sustainable forest management, collaboratively protect rare, threatened, and endangered species that occupy the watershed lands, and provide delivery of water to local communities.

Land Conservation Commitment

Public Uses

6-Mile Valley (Spaulding)



Lake Almanor



Hat Creek

Recreation

Number of Campgrounds:	41
Number of Camp Units:	1,130
Number of Day Use/Picnic Facilities:	37
Number of Day Use/Picnic Units:	311
Number of Other* Facilities:	34
Annual Number of Camp Visitors:	175,000

Third-Party Uses

- Water Consumption / Irrigation
- Agriculture and Grazing: Cattle Grazing, Fish Hatcheries, bee hive farms, and tree farms – 35 Agreements
- Recreation: Recreational Home Sites, Marinas, Resorts, and Parks – 185 Agreements
- Boat Docks: Private and Commercial – 1,063 Agreements
- Other: Public Library, Fire Stations, Parking, Mining, and Other Miscellaneous Uses – 23 Agreements

Campground		Group Camp	
Picnic Area		Group Picnic Area	
Fishing Access		Scenic Overlook	
Trailhead		Swim Beach	
Visitor Information Center		Car-Top Boat Launch	

The watershed lands support myriad recreational activities, including individual and group camping, picnic areas, boating, fishing, swimming, hiking, and white-water rafting. Additionally, local businesses and residents benefit from a variety of other uses of the land