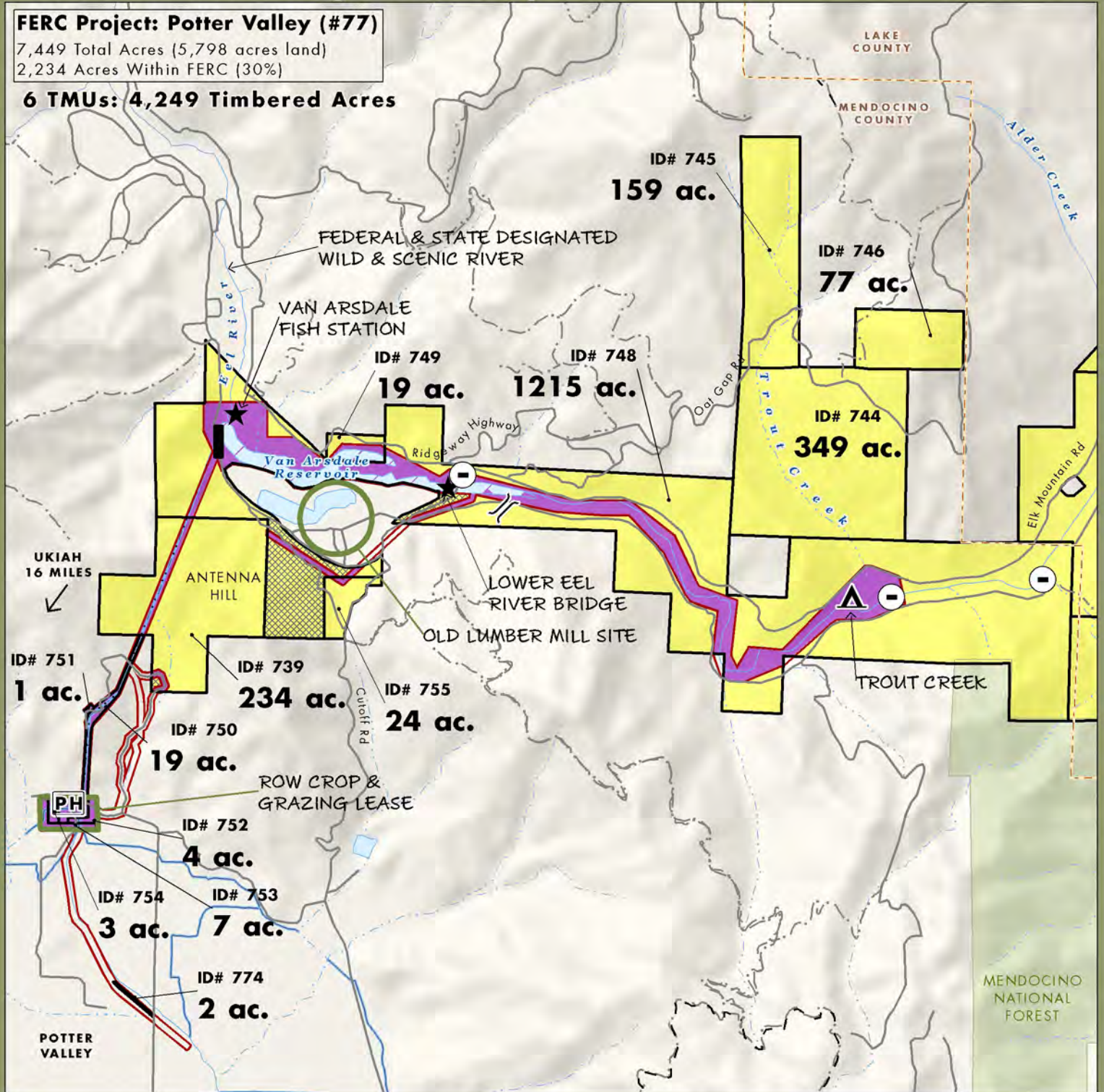


Eel River Planning Unit: Map 1

FERC Project: Potter Valley (#77)

7,449 Total Acres (5,798 acres land)
2,234 Acres Within FERC (30%)

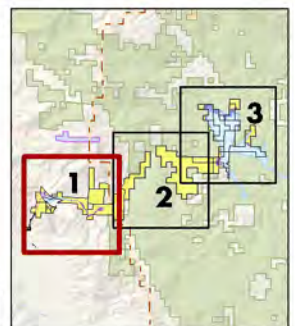
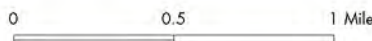
6 TMUs: 4,249 Timbered Acres

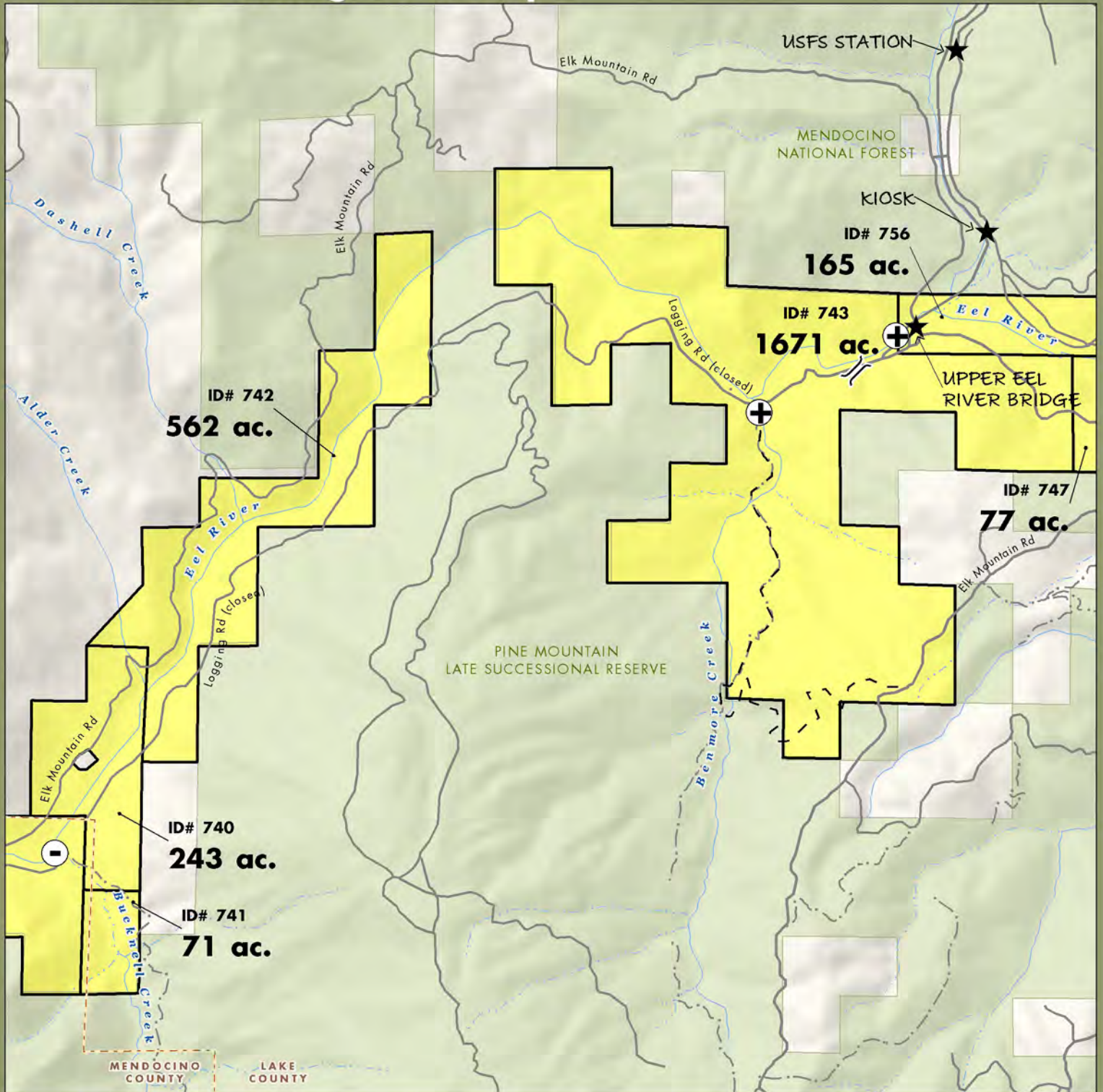


- PG&E Lands Preliminary Designated for Donation
- PG&E Lands Preliminary Designated for Retention
- PG&E Lands Under Water
- Legal Parcel Boundary and Id Number
- Certain Considerations May Make Donation Inadvisable

- Private
- USFS
- OHV Road
- Trail
- FERC Boundary
- Boat Launch
- Campground
- Dam
- Day Use
- Feature of Importance
- Gate
- OHV Use Area
- Powerhouse
- Whitewater Put-In/Take-Out

Acreage and location of lands preliminarily designated for retention by PG&E outside the FERC boundary are approximate. FERC boundary is approximate and may change over time.





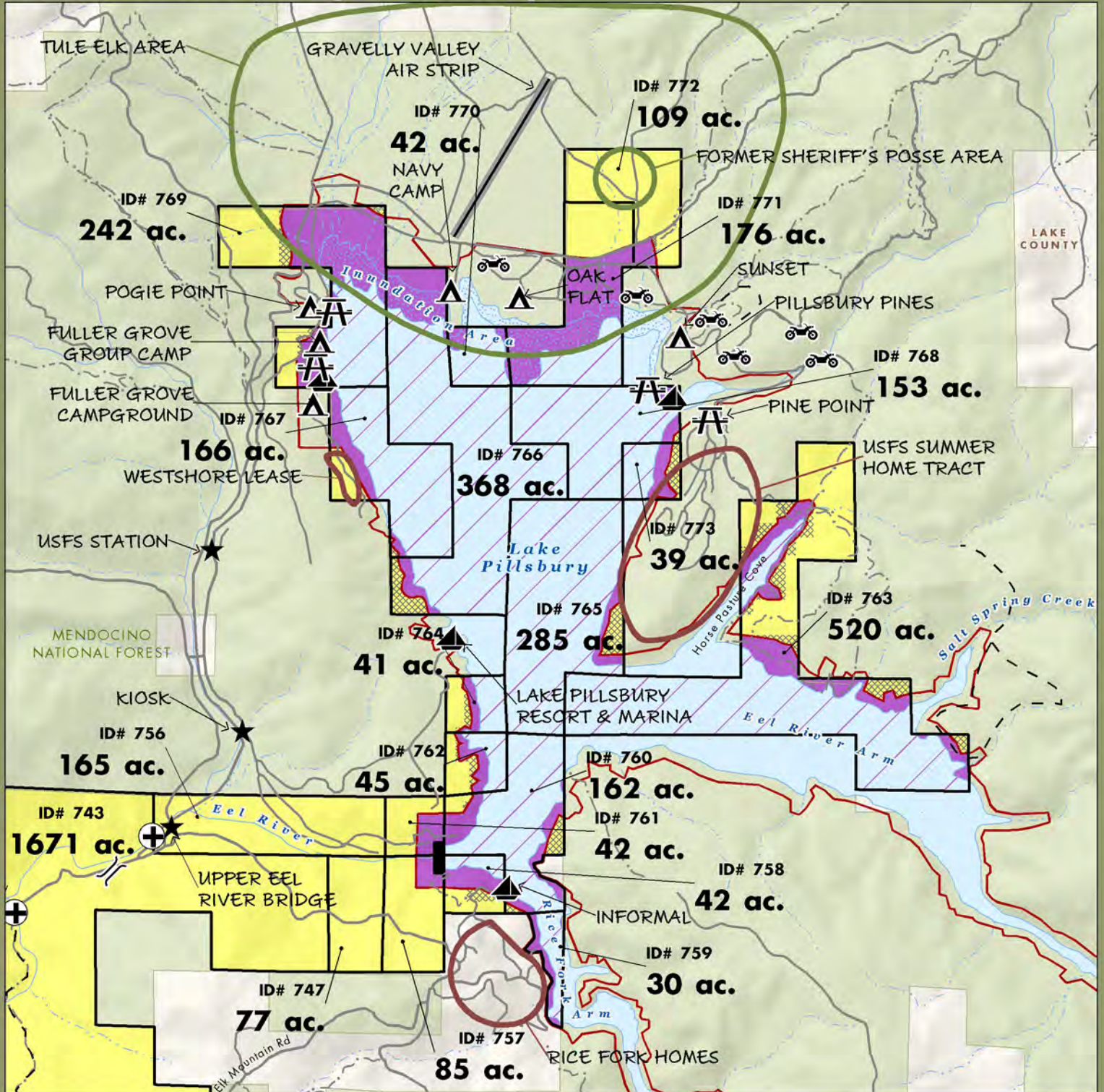
PG&E Lands Preliminary Designated for Donation	Private	Boat Launch	Feature of Importance
PG&E Lands Preliminary Designated for Retention	USFS	Campground	Gate
PG&E Lands Under Water	OHV Road	Dam	OHV Use Area
Legal Parcel Boundary and Id Number	Trail	Day Use	Powerhouse
Certain Considerations May Make Donation Inadvisable	FERC Boundary	Whitewater Put-In/ Take-Out	

Acreage and location of lands preliminarily designated for retention by PG&E outside the FERC boundary are approximate. FERC boundary is approximate and may change over time.

0 0.5 1 Mile

February 2011

Eel River Planning Unit: Map 3



PG&E Lands Preliminary Designated for Donation	Private	Boat Launch	Feature of Importance
PG&E Lands Preliminary Designated for Retention	USFS	Campground	Gate
PG&E Lands Under Water	OHV Road	Dam	OHV Use Area
Legal Parcel Boundary and Id Number	Trail	Day Use	Powerhouse
Certain Considerations May Make Donation Inadvisable	FERC Boundary	Whitewater Put-In/Take-Out	

Acreage and location of lands preliminarily designated for retention by PG&E outside the FERC boundary are approximate. FERC boundary is approximate and may change over time.

0 0.5 1 Mile

February 2011