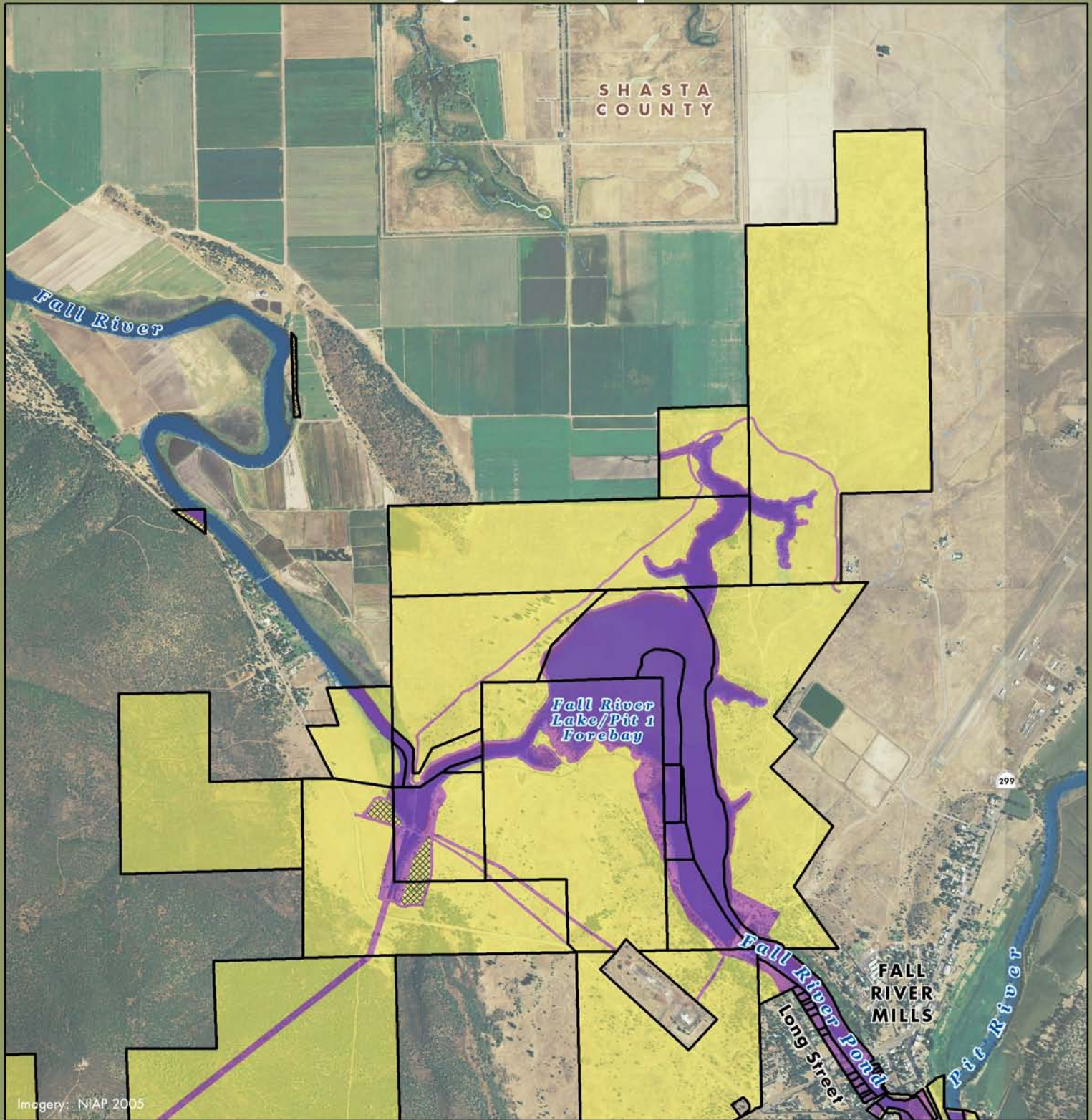





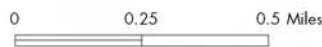
# Fall River Mills Planning Unit: Map 1



Imagery: NJAP 2005

-  PG&E Lands Preliminarily Designated for Donation
-  PG&E Lands Preliminarily Designated for Retention
-  Certain Conditions May Make Donation Inadvisable

Acreage and location of lands preliminarily designated for retention by PG&E outside the FERC boundary are approximate. FERC boundary is approximate and may change over time.

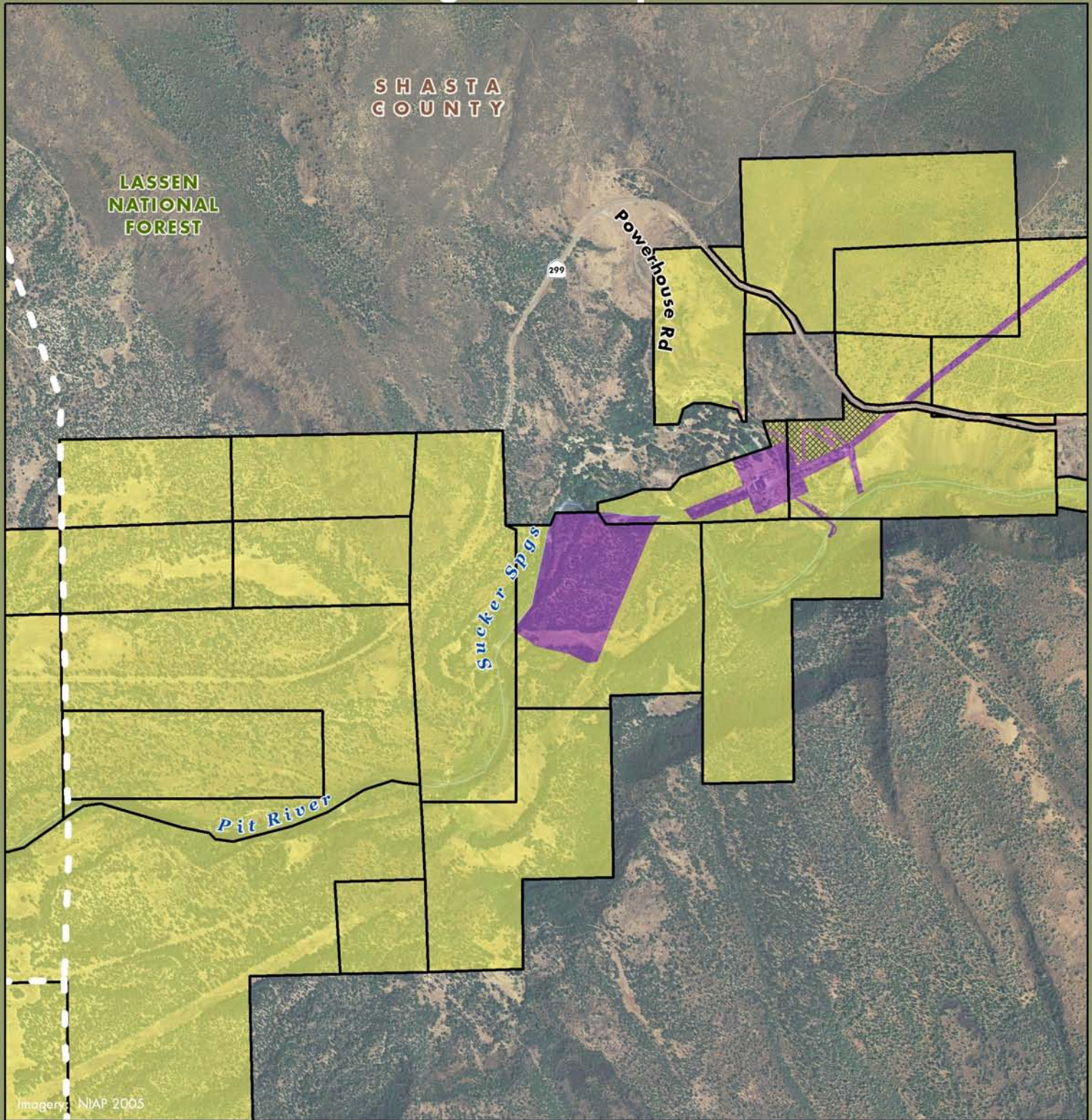





EDAW | AECOM

October, 2009

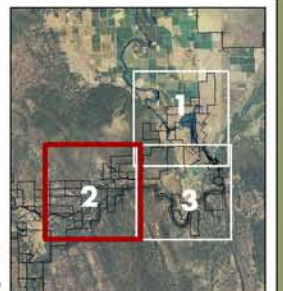
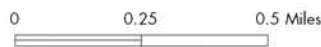




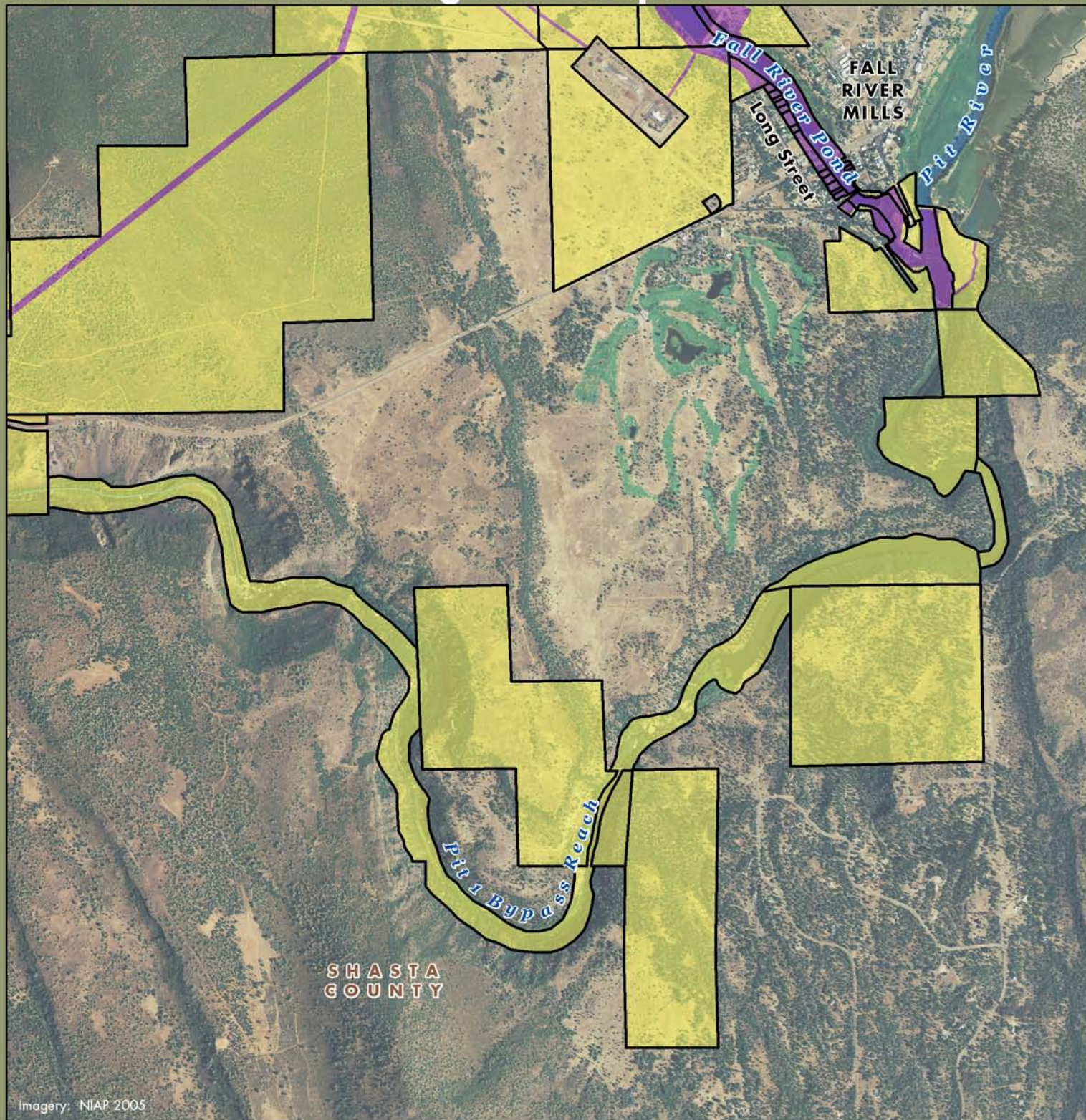


-  PG&E Lands Preliminarily Designated for Donation
-  PG&E Lands Preliminarily Designated for Retention
-  Certain Conditions May Make Donation Inadvisable


Acreage and location of lands preliminarily designated for retention by PG&E outside the FERC boundary are approximate. FERC boundary is approximate and may change over time.





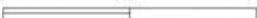


Imagery: NIAP 2005

-  PG&E Lands Preliminarily Designated for Donation
-  PG&E Lands Preliminarily Designated for Retention
-  Certain Conditions May Make Donation Inadvisable

Acreage and location of lands preliminarily designated for retention by PG&E outside the FERC boundary are approximate. FERC boundary is approximate and may change over time.

0 0.25 0.5 Miles



EDAW | AECOM

October, 2009

